



INSTALLATION GUIDE

FR-LCD-32

INDOOR HOUSING FOR LCD AND PLASMA MONITOR

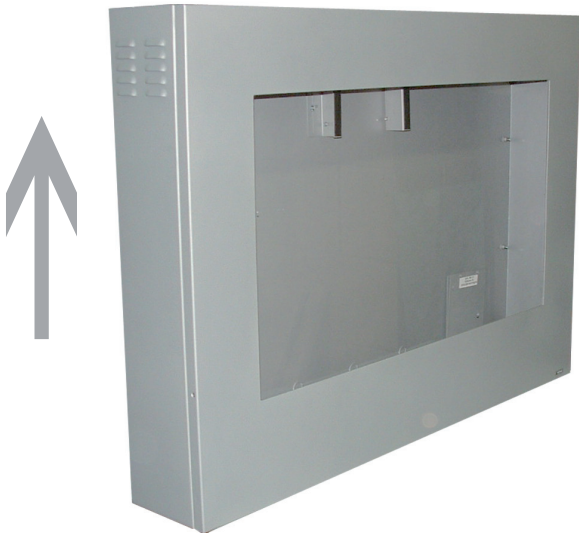


MONITOR INSTALLATION GUIDE.....	2-3-4-5
FSMP-LCD ASSEMBLY GUIDE.....	6-7
WALL MOUNT OPTION	8
SEALING MOUNT OPTION	9-10-11
WARRANTY	12

FR-LCD-32

STEP 1

- Remove the (4) security screws on the TOP and sides of the door and slide it up to open it.



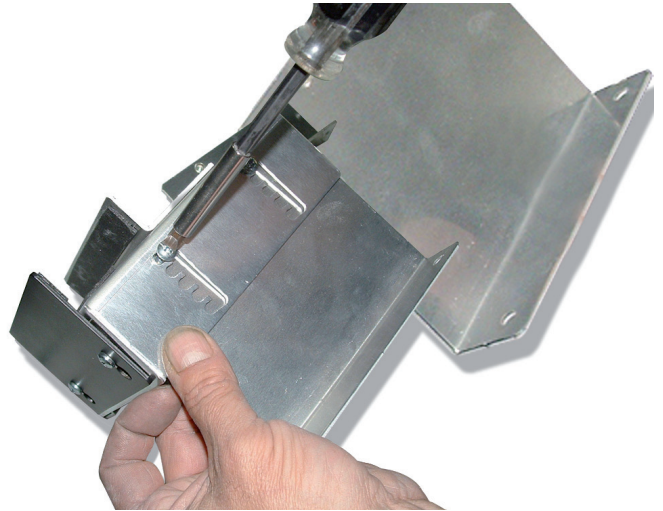
STEP 2

- Adjust the height of the BOTTOM brackets to align the BOTTOM of the screen area to the arrows on each side of the enclosure.



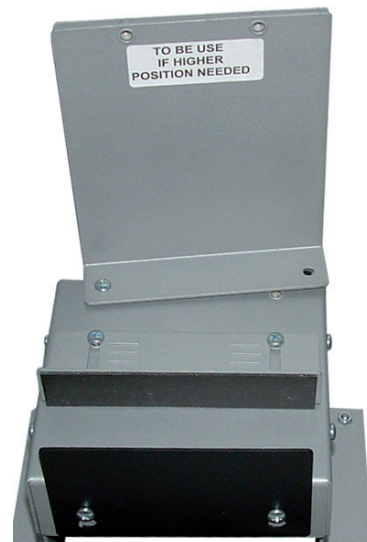
STEP 3

- If you need more height to fit the screen with the window (arrows) you can use the longest L brackets as shown.



STEP 4

- Unscrew the L brackets already fixed on the BOTTOM brackets.



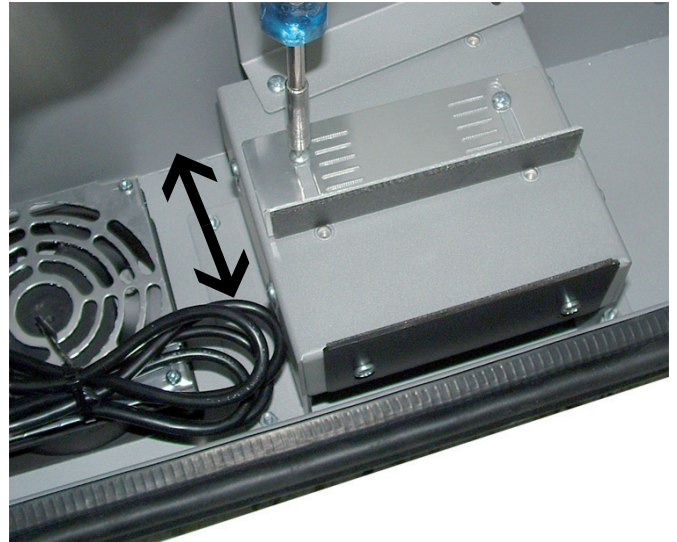
STEP 5

- Remove the (2) screws on each sides of the BOTTOM brackets.



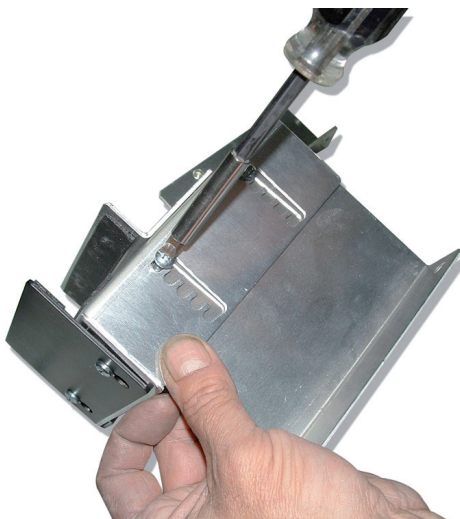
STEP 7

- Adjust the bracket to the depth of the BOTTOM of the monitor.



STEP 6

- Replace the small L brackets by the longest ones and fix them in place with the screws.



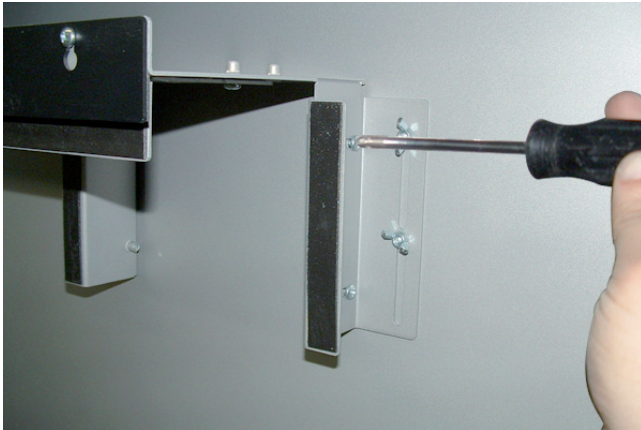
STEP 8

- Adjust the height of the top bracket. Use the monitor height to adjust the distance between the BOTTOM and the TOP brackets.



STEP 9

- Adjust the depth on the TOP bracket to the depth of the monitor.



STEP 11

- Sit the monitor on the bracket and make sure that the side of the screen area is in line with the BOTTOM arrows.



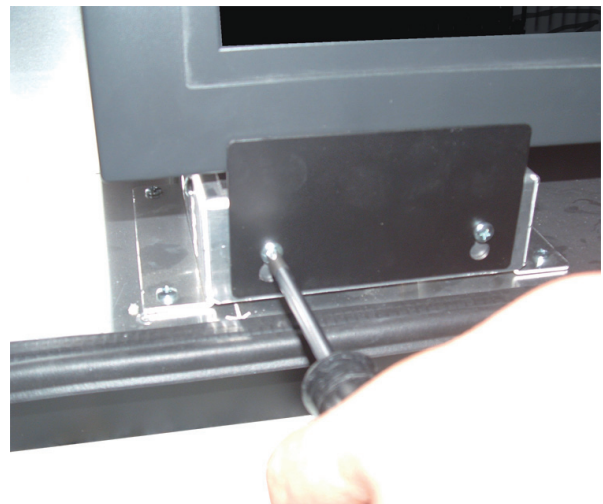
STEP 10

- Remove the front black plate on each bracket.



STEP 12

- Re-install the front plates on the BOTTOMS brackets.

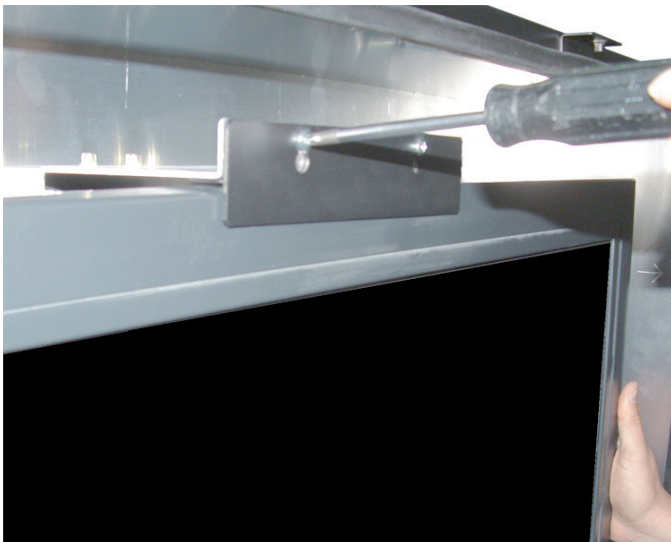




MONITOR INSTALLATION GUIDE FR-LCD
FR-LCD-32

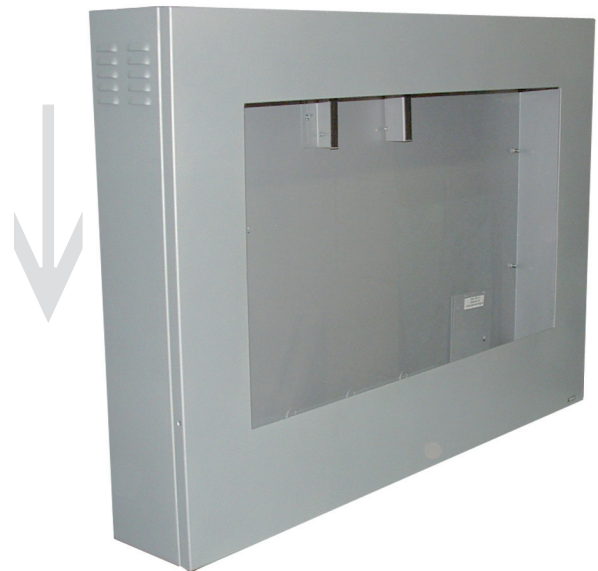
STEP 13

- Re-install the front plate on the top bracket to firmly fix the monitor to the support.



STEP 14

- Re-install the door on the enclosure. First, fix the 2 TOP security screws and each side one's in second.



STEP 1

- Attach 4 parts together.
- Position TOP with TOP,
BOTTOM with BOTTOM.
- Tighten 3 bolts on each corner using
furnish tool.



STEP 2



- Dismantle L bracket on each side of the wall
mount leaving the (2) BOTTOM bolts loose.



STEP 3

- Attach L bracket on each side of the back of the enclosure.



- Make sure to use furnish counter sink bolt (2) and it's nylon washer for the top.

- Use bolts that are already on the back of the enclosure for the rest of the attachment.

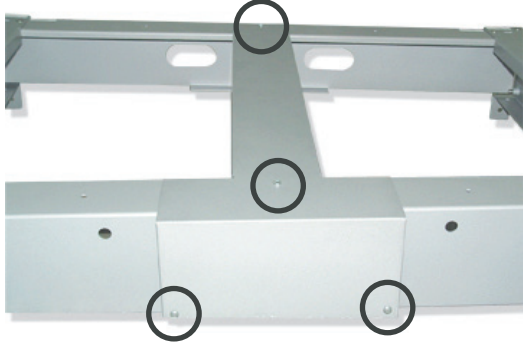




INSTALATION GUIDE WALL MOUNT OPTION

STEP 1

- Dismantle cable cover (4) screws.



- Dismantle 1 1/2" flange (4) bolts .



- Cable cover and flange will not be needed for wall mount application.

STEP 2

- Attach wall mount to the wall with adequate structural strength.



STEP 3

- Slide back enclosure on to the lower bolts that are already in place and secure at the TOP with the (2) remaining bolts.



STEP 4

- Secure everything with (1) security screws on each side.

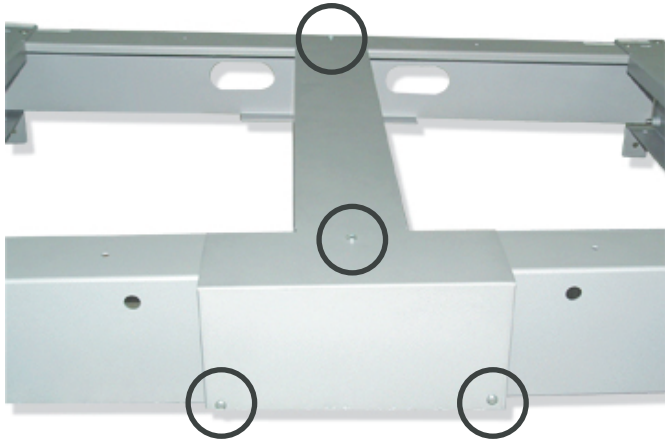


BATKO

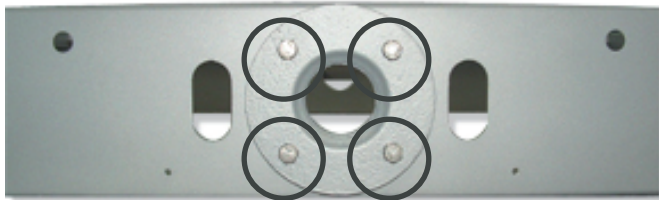
INSTALATION GUIDE SEALING MOUNT OPTION

STEP 1

- Dismantle cable cover (4) screws.

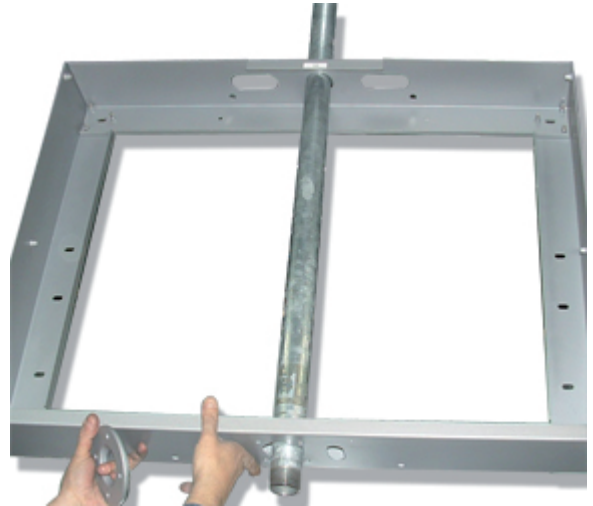


- Dismantle 1 1/2" flange (4) bolts.



STEP 2

- Insert pre-installed pipes through bracket main frame.



STEP 3

- Install the flange on the pipes.



BATKO

INSTALLATION GUIDE SEALING MOUNT OPTION

STEP 4

- Secure flange with 4 bolts & 4 lock washers.



STEP 5

- Fix the LCD enclosure on the ceiling bracket.



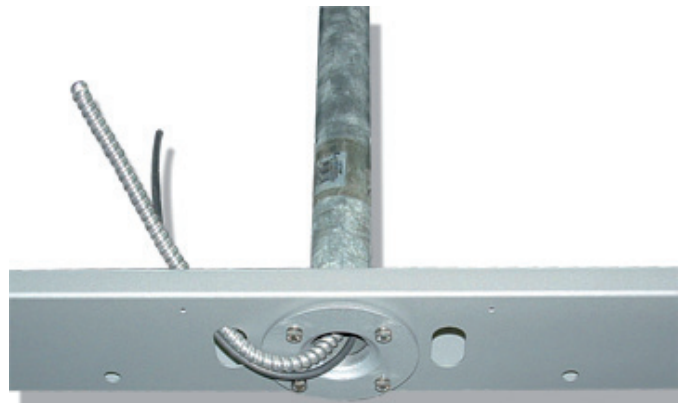
STEP 6

- Screw the top 3/8" bolt and middle security bolt.



STEP 7

- Cables can come through pipe as shown.



STEP 8

- install wire cover (4) screws.





WARRANTY

IMPORTANT SAFEGUARDS AND WARNINGS

- Installation and servicing should only be done by qualified service personnel and conform to all local codes.
- The installation method and materials should be capable to supporting four times the weight of the enclosure.
- Only use replacement parts recommended by BATKO

WARRANTY AND RETURN INFORMATION

WARRANTY

BATKO will repair or replace, without charge, any merchandise proved defective in material or workmanship for a period of one year after the date of shipment. In order to expedite parts returned to the factory for repair or credit, please call the factory at 1-800-463-1455 to obtain an authorization number. Goods returned for repair or credit should be clearly identified with the assigned Cairo number and freight should be prepaid. All merchandise returned for credit may be subject to a 20% restocking and refurbishing charge. Repairs made necessary by reason of misuse, alteration, normal wear, or accident are not covered under this warranty.

LIMITED WARRANTY

Batko makes no warranty of any kind, express or implied except that the sold under this agreement shall be free of defects in material and workmanship for a period of one year from the user's date of purchase. User assumes risk and liability resulting from the use of the goods, whether used singly or in combination with other goods. BATKO neither assumes nor authorizes any other person to assume for it any other liability in connection with the sale or use of the goods sold and there are not oral agreements or warranties collateral to or affecting this limited warranty. BATKO will repair or replace defective parts or equipment within one year of the date of purchase, at its option, provided the part or equipment is returned prepaid to BATKO'S plant. No allowance for outside labor charges are implied within the term of this warranty. Under no circumstances will BATKO be responsible for special, indirect or consequential damages. The remedies set forth in this limited warranty are exclusive and the liability of BATKO with respect to any contract or sale or anything done in connection there with, whether in contract, in tort, under any warranty or otherwise shall not, except as expressly provided here in, exceed the price of the equipment or part on which such liability is based. Any damage caused by improper use, operation beyond capacity, substitution of parts or equipment not approved by BATKO, improper packaging, failure to observe installation or other instructions, transit, or repair by any other than BATKO, will not be covered by and shall void this Limited Warranty.

Ship freight prepaid to :
BATKO
485 François-Gignac,
Portneuf, Qc.
Canada, G0A-2Y0